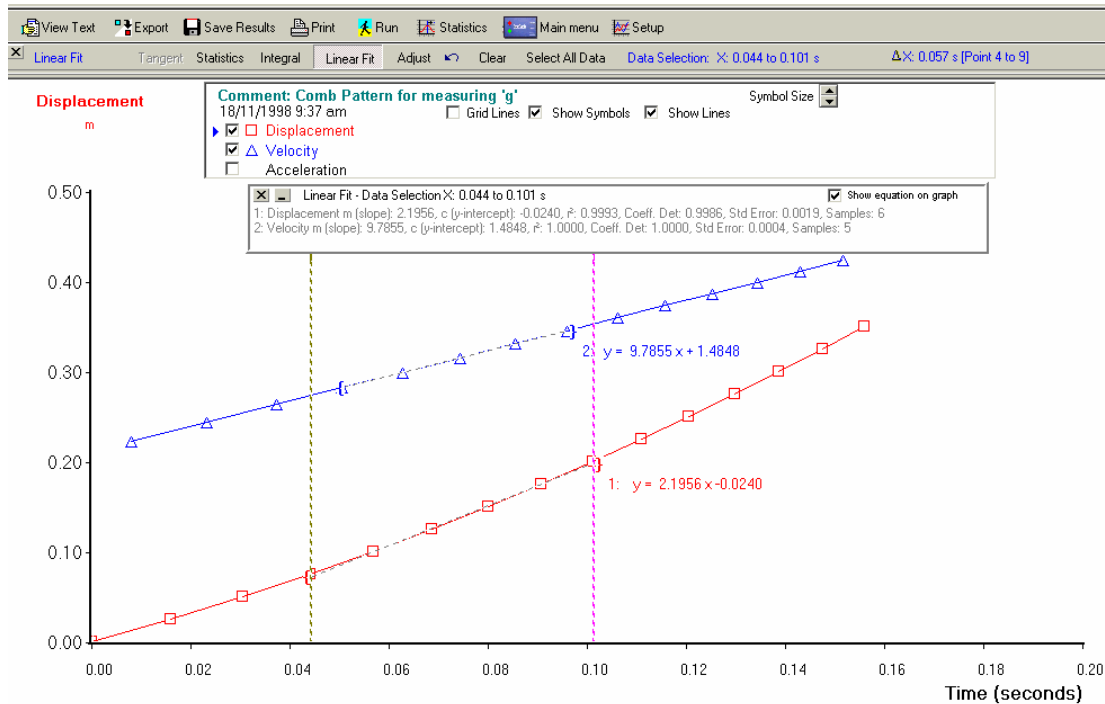
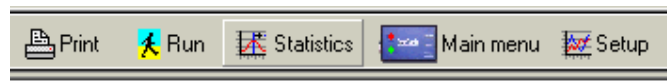


Statistical Analysis Tools

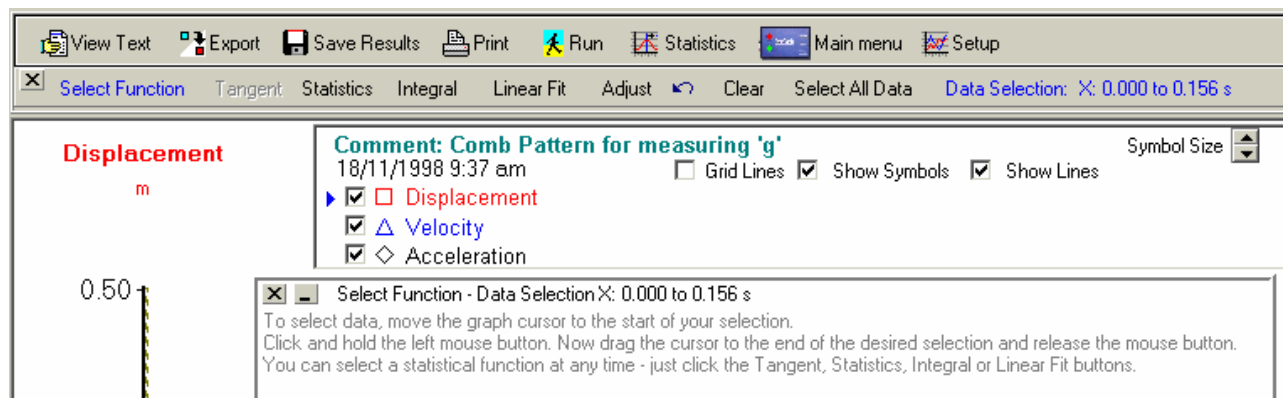
Statistical Analysis Tools are now available directly on your WinTec results graph. You can easily find the tangent at a point, perform a linear fit, calculate the area under the curve or view statistical information.



To perform statistics calculations on your Data Logger, Fast Scanner or Mechanics and Timing experiment results, click the Statistics button on the Results menu tool bar.



The Statistics Options Menu will appear. The Statistics Information Window will be displayed with instructions to show you how to select data points.



To use the statistics functions, you need to select the range of data to be included in the calculations and select the required statistical function.

Select data points

On the graph, the range of data selected is indicated by two vertical dotted lines. By default, all data will be included in the selection.

To select a different data range, move the mouse cursor over the graph to the start of the data to be included in the calculations. Press and hold the left mouse button then move the mouse cursor to the end of the desired data selection. Release the mouse button. The data selection markers will move to the new position and the statistics results will be recalculated for the new selection.

Select Statistics Function

Tangent – As you move the graph pointer the tangent at the current cursor position will be determined.

Statistics – Shows the Minimum, Maximum, Mean, Median and Standard Deviation for the selected data range.

Integral – Calculates the area under the curve for the selected data range.

Linear Fit - Calculates linear fit for the selected data range. The fitted line will be drawn on the graph.

Other Menu Items

Adjust – Allows you to adjust the position or resize the data selection on the graph. To adjust the data selection, click Adjust. A green selection adjustment tool will appear over the X axis. Prompts are shown on the tool. To move the selection, place the mouse cursor over the centre of the tool. To resize the selection, place the mouse cursor near the edge of the selection adjustment tool. Click the left mouse button and move the mouse to the desired position. Release the mouse button.

Clear – Clears the current statistics selection and redraws the graph.

Select All Data – Includes all data in the statistics range selection.

The Statistics Information Window

You can close, minimise or move the Statistics Information Window. To move it, place the mouse over the Statistics Information Window, click and hold down the left mouse button, drag the window to a new position and release the mouse button. You can also close or minimise the statistics information window – it will pop up again if you select a different data range or statistics function. To turn off Statistics, click the cross on the Statistics Options menu.



Tain Electronics Pty Ltd

10 Rowern Court, Box Hill North Vic 3129, Australia

Tel: 03 9898 7366

email: info@tain.com.au

ABN: 70 006 496 706

Fax: 03 9899 7992

web: www.tainlab.com