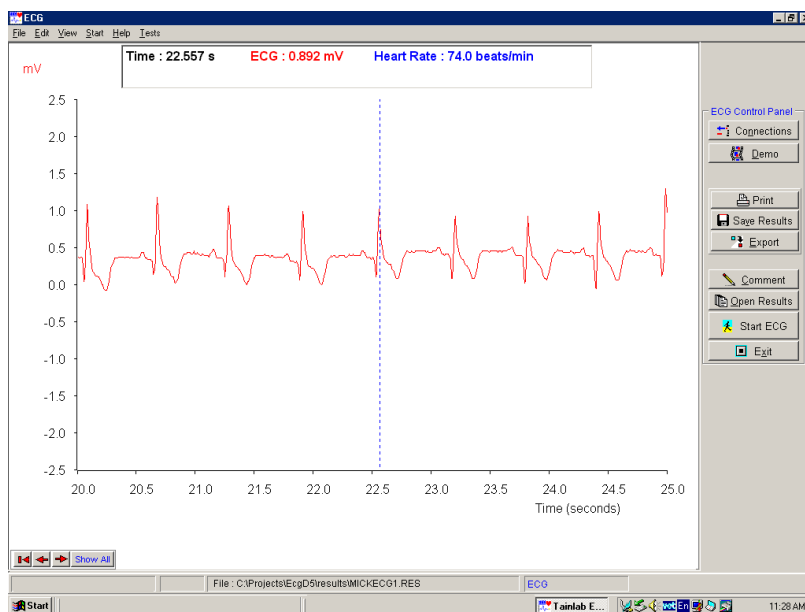


ECG

Electrocardiogram



- Display ECG waveforms and pulse rates on the PC screen.
- The ECG amplifier is safe and easy to use with any Tainlab interface.
- Comes complete PC software and with 20 disposable electrodes.
- Attach the disposable electrodes to both wrists and lower leg – chest electrodes are not required.
- A continuous heart activity pattern can be displayed and examined in detail. As with all Tainlab experiments, the recorded data can also be printed or saved to disk for later use.
- Suitable for any Tainlab interface.

Cat. No. CB105 \$220 (exc. GST)